

# FLEX SP

## AEROSOL FLOORING ADHESIVE

FLEX SP is a solvent-free, non-flammable spray adhesive used for installing FloorFX resilient flooring in residential and commercial applications. The inverted delivery system allows the installer to apply adhesive from a normal standing position. It is particularly convenient since it can be used in occupied buildings and greatly reduces the handling and application requirements associated with conventional bucket adhesives. FLEX SP demonstrates highly aggressive grab and shear bond strength, and has outstanding water and plasticizer resistance.

### USE WITH THESE FLOORFX PRODUCTS:

QuietX Acoustical Luxury Vinyl  
Perform Luxury Vinyl  
UltraCore GX  
UltraCore RLX  
Repose

### SUBSTRATE CONDITIONS:

Use on concrete substrates with up to 93% RH (per current ASTM F2170), and pH of 8.0–11.0.

### LIMITATIONS:

Do not allow product to freeze. Do not expose to temperatures over 122°F. Shelf life is two years from date of manufacture, in unopened container. Store indoors at a temperature between 65–95°F.

### COVERAGE:

Rate of application depends on flooring product being installed and porosity of the substrate.

Coverage is approximately 140 - 150 square feet per can.

### BEFORE YOU BEGIN:

Important: Proper substrate preparations are essential. Moisture testing must be performed and documented before installation begins. Read Technical Bulletin titled Substrate Preparation for Adhesives for complete instructions before beginning installation. This document may be obtained by calling 503-222-0745.

### USAGE:

A clean substrate is ESSENTIAL! Thoroughly sweep and vacuum the substrate first. Damp mop to remove any remaining dust or debris. Extra attention to substrate preparation is essential for a successful installation.

### Application:

Shake can well before each use. Point can downwards, press the side of the nozzle tip as you slowly walk back and forth. Do not use a sweeping motion as this may create uneven coverage. Clean up drips. Be sure to achieve full coverage. When using on a non-porous substrate, a lighter application may be necessary.

NOTE: It is up to the end user to determine the coverage that is appropriate for flooring and jobsite conditions. Bond testing prior to the installation will help identify the appropriate application rate, open and working time, and any potential bonding problems to the substrate or flooring. To determine the accurate coverage rate, measure and chalk line the substrate into grids (using the appropriate square feet of area for the adhesive application) and spray the entire can of adhesive onto each measured grid area.

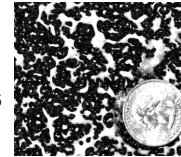
### Open Time:

Allow the adhesive to dry completely with no transfer to fingers when lightly

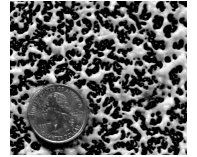
touched. Open time will vary depending on the adhesive coverage, substrate porosity and the ambient conditions. Working time for the adhesive should not exceed 4 hours.

### Spray Pattern:

Proper Spray Pattern for coverage of approx. 160-185 sq. ft.



Proper Spray Pattern for coverage of approx. 140-150 sq. ft.



### Flooring Installation:

Roll the floor immediately after the installation is complete with the appropriate roller specified for the flooring type. Normal traffic and rolling loads may be allowed as soon as the installation, finishing and clean-up are complete.

### Clean up:

Wet adhesive overspray or drips should be cleaned with soap and water on a clean cloth. Dried adhesive may require the use of a solvent adhesive cleaner. Between uses, clean the spray tip immediately with a clean wet cloth to prevent accumulation of dried adhesive.

### PRECAUTIONARY STATEMENTS:

FOR PROFESSIONAL USE ONLY – KEEP OUT OF REACH OF CHILDREN

P412: Do not expose to temperatures exceeding 50 °C/ 122 °F.

P235 + P410: Keep Cool. Protect from sunlight.

P103: Read label before use.

P102: Keep out of reach of children. In case of eye contact, flush with water for 10-15 minutes. If irritation persists contact a physician. If prolonged skin contact causes irritation, wash with soap and water. If swallowed, consult a physician.

Safety glasses and gloves are recommended if contact is expected. Read SDS for detailed product information.

SDS may be obtained by calling 503-222-0745.

### DISCLAIMER:

Users should determine the suitability of this information or product for their own particular purpose or application. Manufacturer is not responsible for the misuse of this product. This Technical Data sheet and the information conveyed herein supersede all previous versions. May 22, 2017

### SUPPLEMENTAL INFORMATION:

Shelf Life: 2 years from date of manufacture in unopened, properly stored container.

Avoid excessive heat or cold. Protect from freezing. Store indoors at a temperature of 65°-95°F.

DOT Hazard Class: 2.2 Consumer Commodity ORM-D

MADE IN USA

### LEED v4 PROGRAM CREDITS (where applicable):

- IEQ Credit 2.1, 2.2: Low Emitting Materials
- Zero (calculated) VOC content (<= 0.5 mg/m3)
- California Section 01350 compliant  
CARB VOC Category: Aerosol Mist Adhesive,  
CARB VOC Limit: 30% by weight, this product = zero VOC's

### DISTRIBUTOR IDENTIFICATION:

FloorFX, 9950 SW Arctic Drive, Beaverton, OR 97005, Telephone: 503-222-0745